

BORN FREE QUIZ



Circle your answer below

1. A group of elephants is called...

- a) A gang
- b) A herd
- c) A crowd

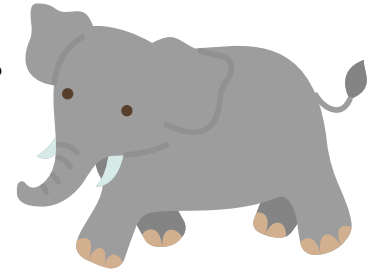


2. How far, on average, does an elephant walk per day to find food or water?

- a) 2 miles
- b) 5 miles
- c) 10 miles

3. Elephants live in groups, but do all the members of the group know each other?

- a) Yes
- b) No

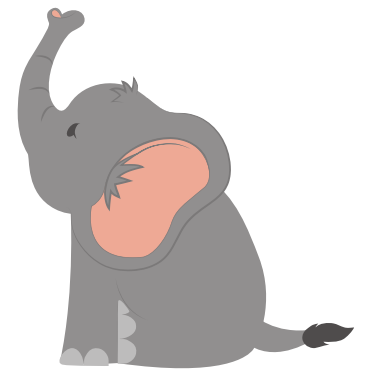


4. How long can elephants live for?

- a) 40-50 years
- b) 50-60 years
- c) 60-70 years

5. How fast can an elephant charge?

- a) 10mph
- b) 25mph
- c) 40mph



6. Elephants have emotions.

- a) True
- b) False

7. How much water does an adult elephant need to drink every day?

- a) 20 litres
- b) 75 litres
- c) 200 litres



8. Elephants can swim.

- a) True
- b) False

9. Which of these is a species of elephant?

- a) African mountain elephant
- b) African forest elephant
- c) African wetlands elephant

10. Elephants can get sunburnt, true or false?

- a) True
- b) False

11. A female elephant who leads the herd is called a...

- a) Empress
- b) Matriarch
- c) Queen



BORN FREE QUIZ ANSWERS



The correct answers are in red

1. A group of elephants is called...

- a) A gang
- b) **A herd**
- c) A crowd

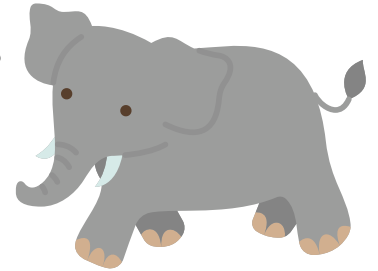


2. How far, on average, does an elephant walk per day to find food or water?

- a) 2 miles
- b) 5 miles
- c) **10 miles**

3. Elephants live in groups, but do all the members of the group know each other?

- a) **Yes**
- b) No

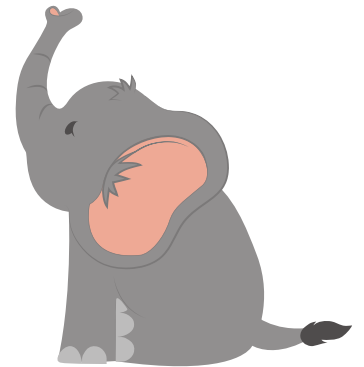


4. How long can elephants live for?

- a) 40-50 years
- b) 50-60 years
- c) **60-70 years**

5. How fast can an elephant charge?

- a) 10mph
- b) **25mph**
- c) 40mph



6. Elephants have emotions.

- a) **True**
- b) False

7. How much water does an adult elephant need to drink every day?

- a) 20 litres
- b) 75 litres
- c) **200 litres**



8. Elephants can swim.

- a) **True**
- b) False

9. Which of these is a species of elephant?

- a) African mountain elephant
- b) **African forest elephant**
- c) African wetlands elephant

10. Elephants can get sunburnt, true or false?

- a) **True**
- b) False

11. A female elephant who leads the herd is called a...

- a) Empress
- b) **Matriarch**
- c) Queen



WELL DONE!